

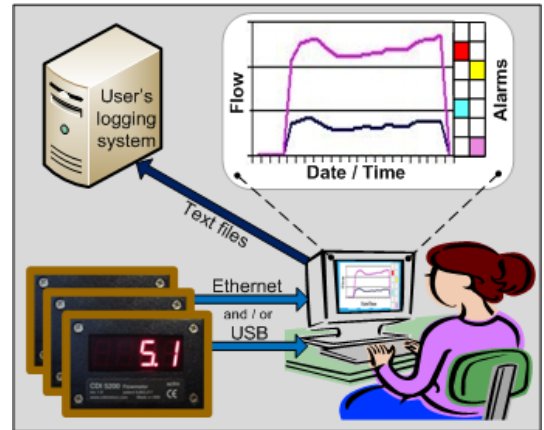
CDI MeterGrapher – Quick Start Guide

FIRST TIME USE – START LOGGING IN A FEW MINUTES!

Suitable for first-time users who have:

- Fewer than 50 CDI meters
- Wired the meters and Adapter
- Set up the Adapter
- Downloaded the software

For help with these aspects, and to view 'how-to' videos, see LINKS below

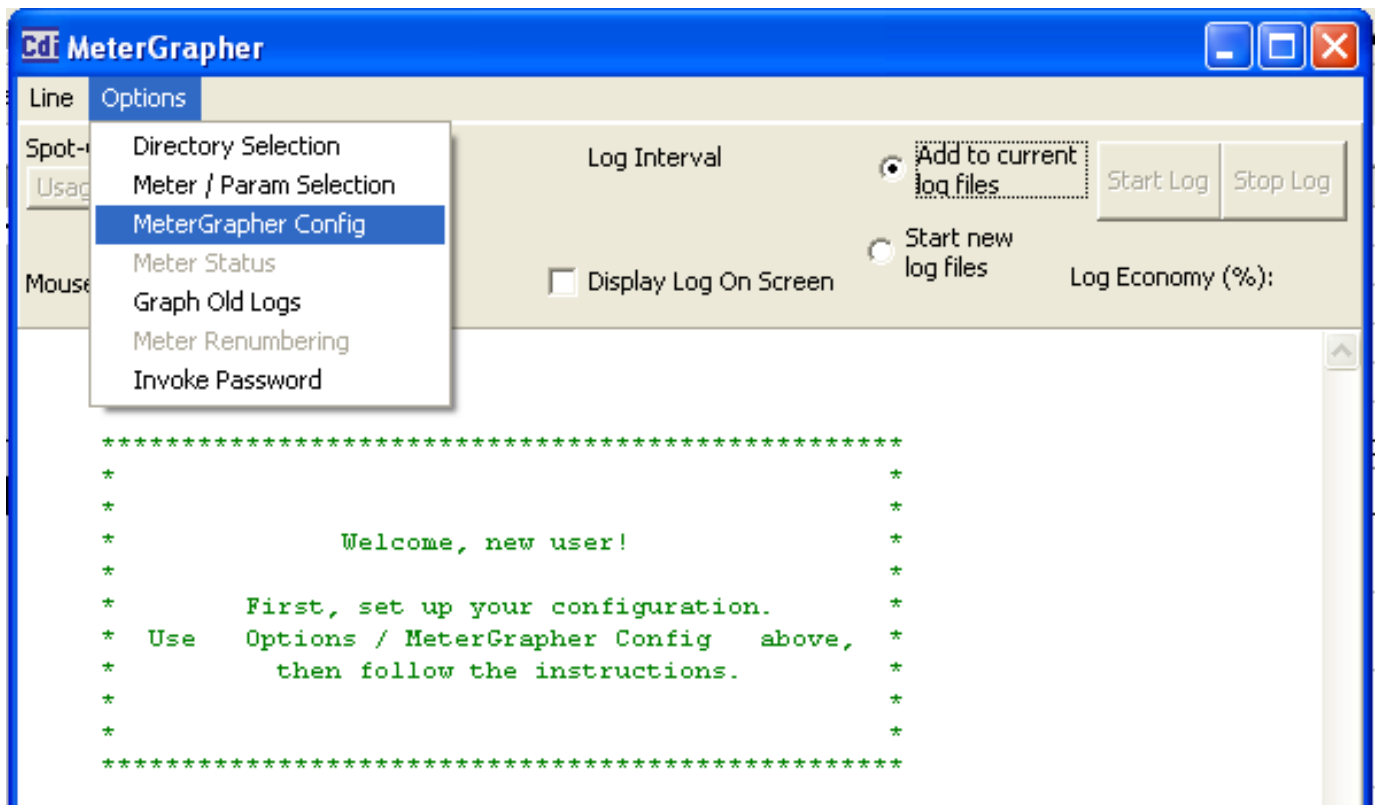


PURPOSE

This Quick Start Guide provides the shortest route for new users to initiate logging their CDI meters.

OPERATION

1. When MeterGrapher is run for the first time the following screen appears:



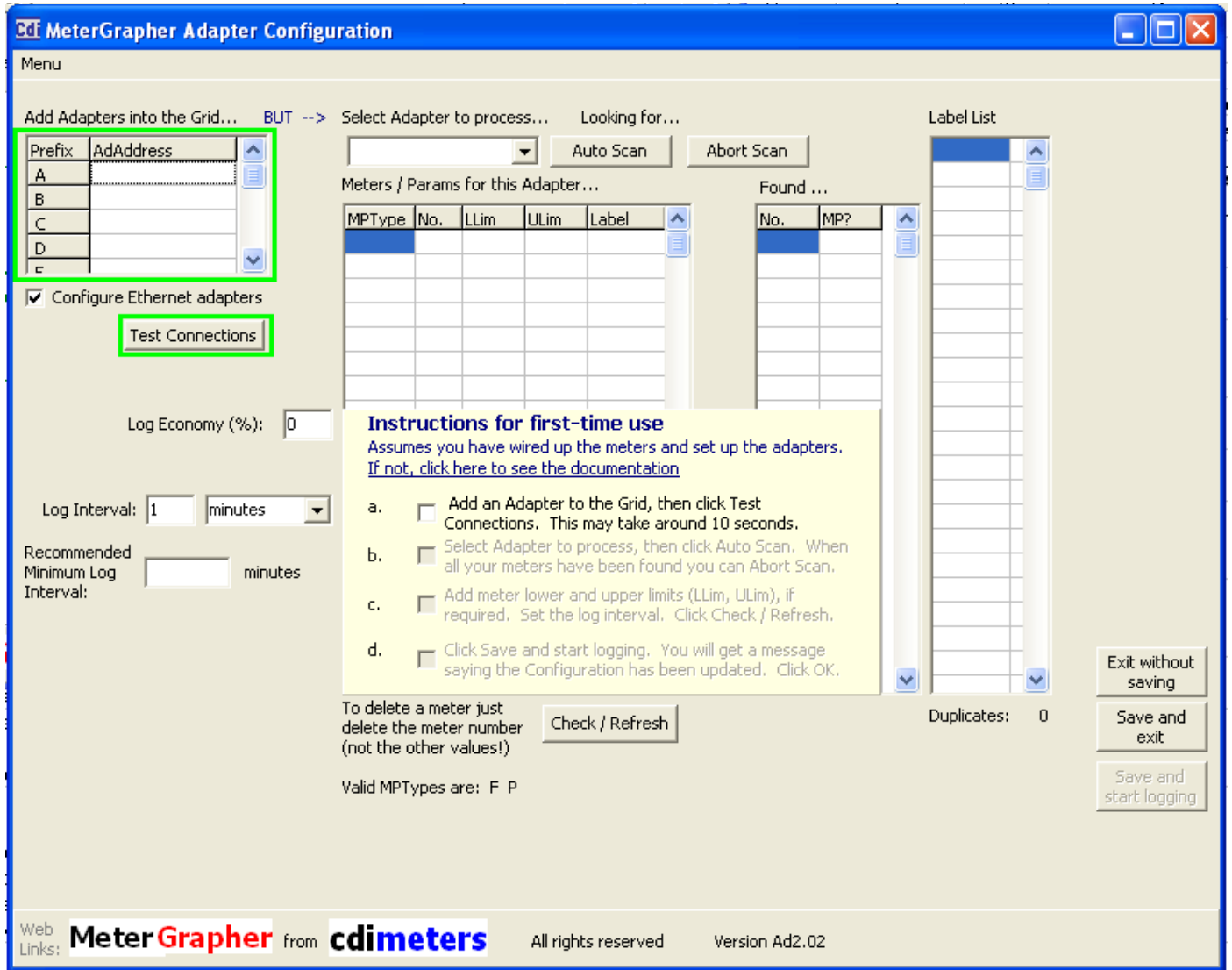
Note: You will not see the Menu drop-down until you click on Options.

2. Click on Options / MeterGrapher Config, then you will see:

CDI MeterGrapher – Quick Start Guide

FIRST TIME USE – START LOGGING IN A FEW MINUTES!

The MeterGrapher Config form, with highlights for first time use:

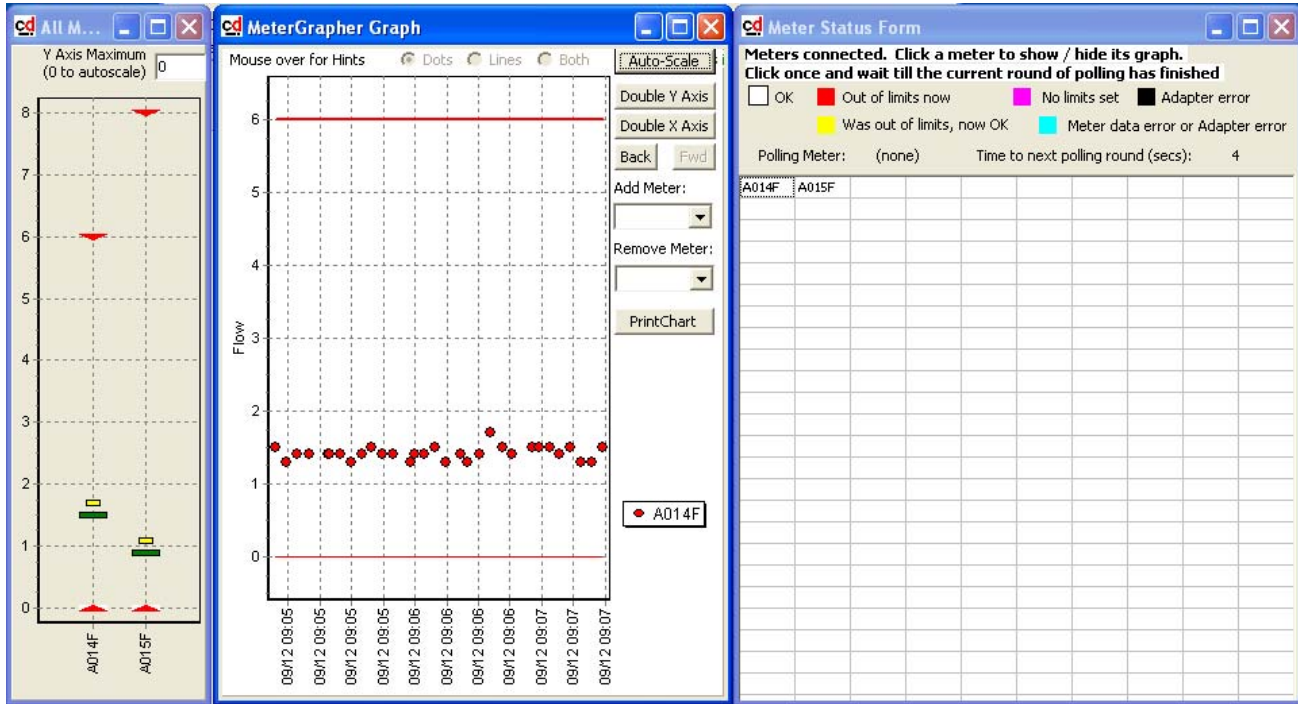


3. 'Instructions for first time use' guides you through the process. Relevant controls are shown in green boxes.
4. As you complete each step the next instruction, and the appropriate controls, are highlighted.
5. The controls have 'tool tips' – hover the cursor over a control for more information.
6. The final instruction will be to 'Save and start logging', then you will see:

CDI MeterGrapher – Quick Start Guide

FIRST TIME USE – START LOGGING IN A FEW MINUTES!

7. The logging forms (the forms on screen are bigger and clearer!):
 - a. All Meters (left) – current values, highest values this session, lower and upper limits.
 - b. Graph (center) – meter values over time (values shown are after a couple of minutes logging).
 - c. Status (right) – current status of each meter.



8. The Main form is also visible, but not shown here for clarity.
 - Logging will continue until it is stopped, using the Stop Log button on the Main Form.
 - (You cannot close MeterGrapher until logging is stopped)
 - If you wish to change the Configuration (e.g. logging interval), first, on the Main Form, choose Line / Offline.
 - You can then choose Options / MeterGrapher Config.

NOW WHAT?

MeterGrapher has many features. It is designed to be intuitive, and most screen controls have tool tips – hover the cursor over a control to see this additional information. If you cannot find your way, try the on-line documentation. This is comprehensive, and includes annotated screen shots, how-to videos and FAQs. If you are still puzzled, the Support Team is available to advise.

SUPPORT

MeterGrapher development continues, and the Team will provide reasonable support free of charge. Contact CDI Meters Inc.

LINKS

MeterGrapher	Home page of all MeterGrapher documentation	http://www.cdimeters.com/MeterGrapherWeb/MG_home.html
Adapters	Detailed information on wiring and Adapter set-up	http://www.cdimeters.com/MeterGrapherWeb/MG_Adapters.html
How-to Video	Screen-capture videos with voice-over showing this process.	COM / USB Users: TBA TCP / IP Users: TBA